

# GENERIQUE TELETHON

MARCHING BAND 2006

Tenor Sax. 1

♩ = 130

§

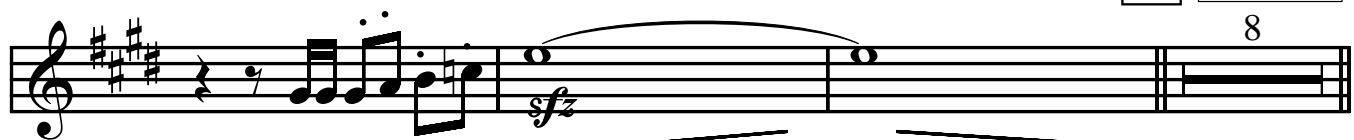


*ff*

7

Ternaire

8



*sfz*

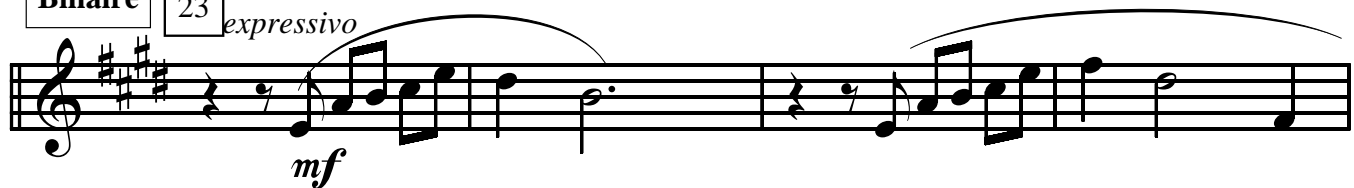
15



Binaire

23

*expressivo*



*mf*

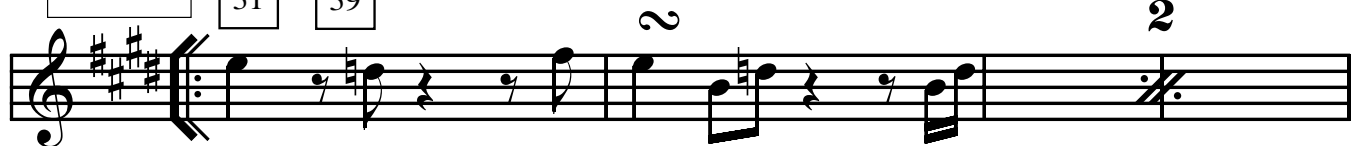


*sfz*

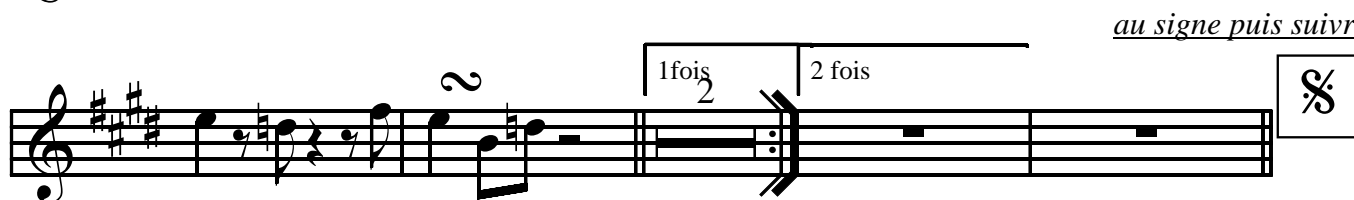
Ternaire

31

39



2



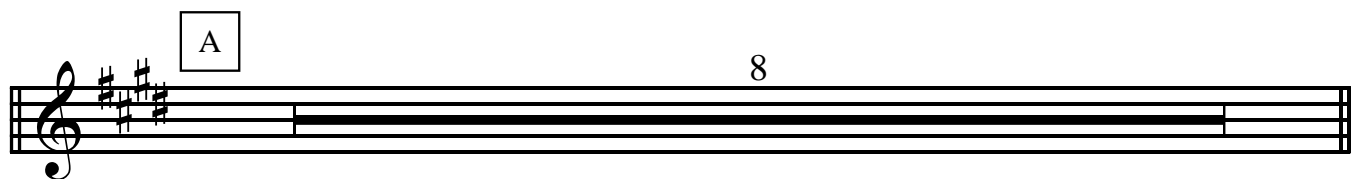
*au signe puis suivre*

1fois

2

2 fois

§



A

8



B

6  
1

Tenor sax 1

The musical score for Tenor sax 1 consists of three staves. The first staff begins with a treble clef and a key signature of three sharps (F#, C#, G#). It contains a series of eighth and quarter notes, ending with a whole rest. The second staff starts with a common time signature 'C' in a box, followed by the word 'Binaire' in a box. The key signature remains three sharps. The music includes eighth and quarter notes, some with accents, and a triplet of eighth notes marked with a '3'. A forte dynamic 'ff' is placed below the staff. The third staff begins with the tempo marking 'RALENTIR'. It continues with eighth and quarter notes, some with accents, and ends with a half note. A forte dynamic 'ff' is placed below the staff.